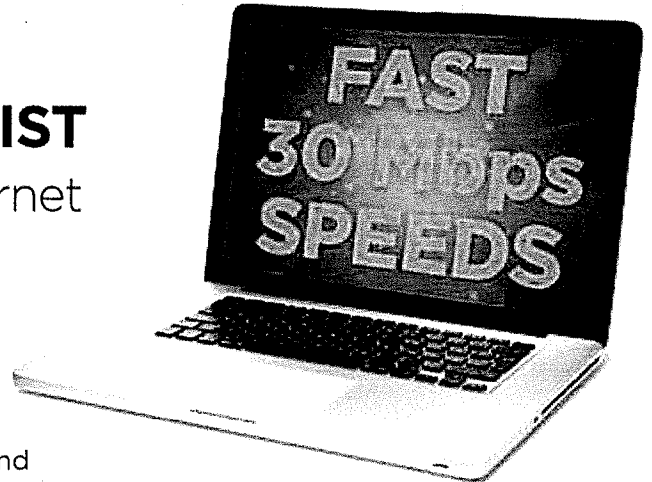




SPECTRUM INTERNET® ASSIST

Affordable, reliable high-speed Internet access for qualifying households



Spectrum Internet Assist is a low-cost, high-speed broadband service that provides qualifying households with Internet service for **\$17.99 per month**.

To qualify for Spectrum Internet Assist, a member of the household must be a recipient of one of the following programs:

- The National School Lunch Program (NSLP); free or reduced-cost lunch
- The Community Eligibility Provision (CEP) of the NSLP
- Supplemental Security Income (SSI) (age 65 and over only)

Programs that do not qualify for Spectrum Internet Assist: Social Security Disability (SSD), Social Security Disability Insurance (SSDI), and Social Security Retirement and Survivor Benefits are different from Supplemental Security Income (SSI) and do NOT meet eligibility requirements.

If you believe you may qualify, visit SpectrumInternetAssist.com.

- Enter in your 5-digit ZIP code to see if Spectrum Internet Assist is available in your area.
- If available, you will receive direction to call 1-844-525-1574 to start the qualification process.
- If Spectrum Internet Assist is not available in your area, you will receive a coming-soon message and be asked to check back for updates.

GET CONNECTED WITH HIGH-SPEED INTERNET FOR **\$17.99/MO**

Spectrum Internet Assist gives your household a reliable, blazing-fast connection to the world of information, education, entertainment and services that are available online.

With Spectrum Internet Assist, you'll enjoy:

- 30 Mbps of Internet speed with NO data caps
- **FREE** Internet modem
- No contracts, ever
- Add fast in-home WiFi for \$5 more a month

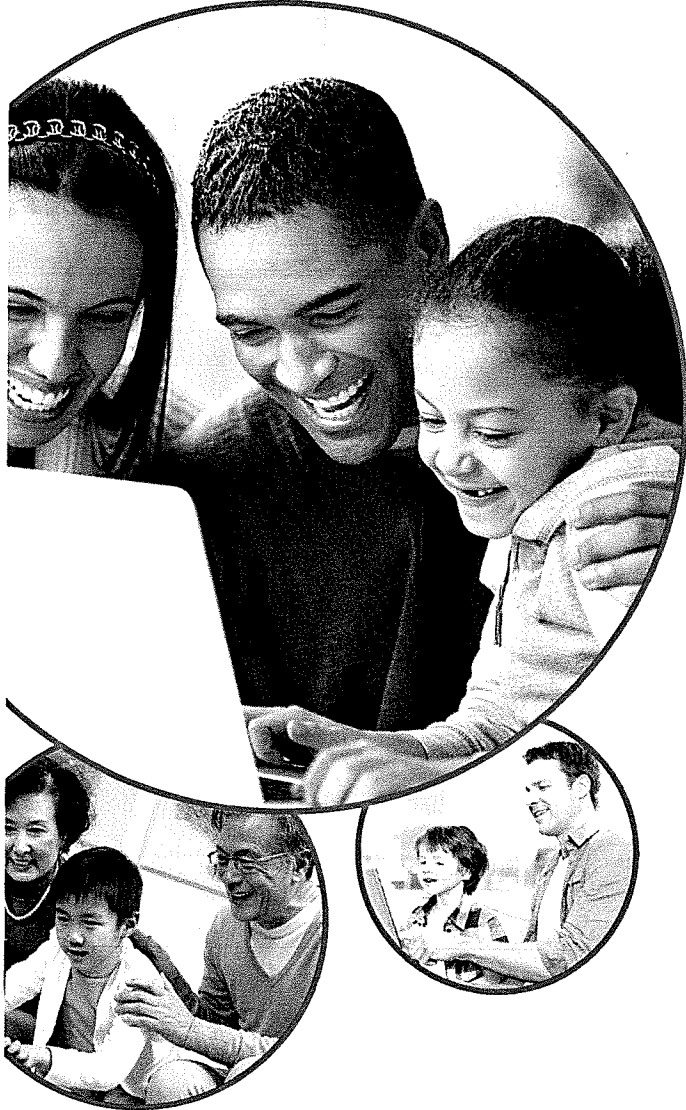
To get started, visit:
SpectrumInternetAssist.com

SPECTRUM INTERNET ASSIST: Limited time offer; subject to change; not transferable. Availability of offer based on eligibility and service address that has been pre-qualified. Offer valid to qualified residential customers who (i) have not subscribed to Charter Communications' Internet services within 30 days prior to requesting services under this offer, (ii) have no outstanding debt for any of Charter Communications' services that was incurred within 1 year prior to requesting services under this offer and (iii) have no outstanding debt to Charter Communications that was incurred for services provided under this offer and that are subject to Charter Communications' ordinary debt collection procedures. Equipment, taxes, fees and surcharges may be extra and subject to change during and after the term; installation and additional services are extra. Available Internet speeds may vary by address. Download speeds are up to 30 Mbps and upload speeds are up to 4 Mbps. WiFi: Equipment, activation and installation fees may apply. Services subject to all applicable service terms and conditions, subject to change. Services not available in all areas. Restrictions apply. ©2019 Charter Communications.

Brighten your child's future with the Internet.


access
from AT&T

Internet for just \$10 a month



The digital world is full of possibilities. AT&T is making it easier to connect to friends, family, and the things that matter most. If at least one person in your household is a **SNAP* participant**, you may qualify for 10Mbps home Internet service at our discounted \$10 rate.**

Access from AT&T takes you online so you and your family can:

- **Do homework**
- **Research colleges and scholarships**
- **Stay up to date with school news and connect with teachers**
- **Connect with friends and family around the country and world**

And a whole lot more!

*Plus, there's NO commitment,
NO deposit and NO installation fee.*

Get an in-home Wi-Fi gateway and access to the nationwide AT&T Wi-Fi Hot Spot network — **INCLUDED** at no extra cost!†

Other eligibility requirements apply.

Visit att.com/access for complete information and to apply.

Or call 1-855-220-5211



*Supplemental Nutrition Assistance Program. **Available only in the AT&T 21-state wireline footprint. Slower speeds (5Mbps for \$10/month or 3Mbps for \$5/month) may be provided depending on availability at your address. Internet speed claims represent maximum network service capability speeds. Actual customer speeds may vary based on factors including site traffic, content provider server capacity, internal network management factors and device capabilities, and are not guaranteed. For more information, go to att.com/speed101. Pricing excludes taxes. From 4/22/16 through 5/22/16, service will include a monthly data allowance of either 15GB data/mo. or 25GB data/mo. depending on the type and speed of service you receive. Beginning 5/23/16 and thereafter, service will include a monthly data allowance of either 15GB, 30GB or 60GB data/mo. depending on the type and speed of service you receive. If you exceed your monthly data plan allowance, you will be automatically charged \$10 for each 50GB of data usage in excess of your data plan, even if less than 50 gigabytes is used. For more information, go to att.com/internet-usage. †Wi-Fi enabled device required. Other restrictions apply. ©2016 AT&T Intellectual Property. All rights reserved. AT&T, the AT&T logo, and all other marks contained herein are trademarks of AT&T Intellectual Property and/or AT&T affiliated companies.